



Wireless RF Test Enclosures

Perform complicated RF Wireless testing in any environment!

Interference-free testing for:

- Cellular - PCS, GSM, 3G
- WiFi 802.11 - all series
- WiMax
- Bluetooth
- RFID
- EMI, RFI test
- Susceptance, emission, radiation

Configured for your needs!

- Standard and custom sizes
- Universal I/O panels
- Extensive connector selection
- Fast delivery
-



Rainford EMC Systems Ltd, North Florida Road, Haydock,
St Helens, WA11 9TN, United Kingdom
Tel: +44 (0) 1942 296190 Fax: +44 (0) 1942 275202 email: sales@rainfordemc.com
Registered No: 5869828 VAT No: 892 2090 18





Wireless RF Test Enclosures



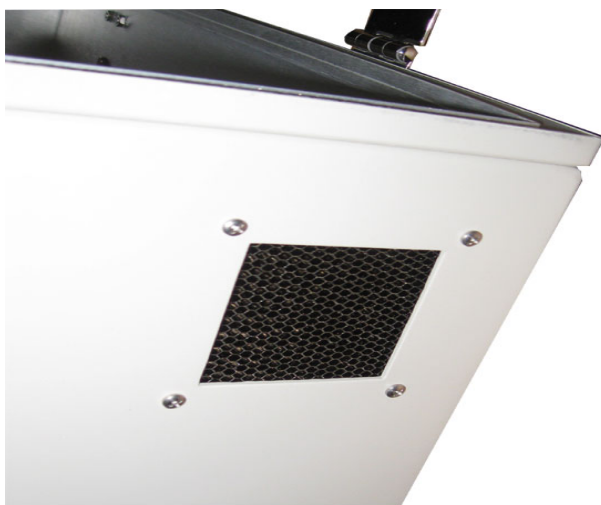
Trust your RF Testing to Rainford EMC Systems in partnership with JRE Test. John Ramsey - the original inventor of the modern RF shielded test enclosure!

Test with confidence, in any environment!

Rugged Stainless Steel hinges on all models

Wide selection of stock and custom enclosures

With our wide selection of enclosures, you are sure to find something right for your job, but if you have a 'special' we are here to help. Our product line grew out of listening to our customer's wants and needs, custom doesn't scare us or lead to 26 week deliveries, we can turn around fast and get you on your way to shipping your product on time



Trust and test assistance

Remember, Rainford EMC Systems and John Ramsey the force behind JRE Test has over 55 years combined experience in RF test and measurement and you'll get both team's full support on any order. We understand RF testing and can save you time and money with our wide line of enclosures and second-to-none technical support.



Rainford EMC Systems Ltd, North Florida Road, Haydock,
St Helens, WA11 9TN, United Kingdom
Tel: +44 (0) 1942 296190 Fax: +44 (0) 1942 275202 email: sales@rainfordemc.com
Registered No: 5869828 VAT No: 892 2090 18





Rainford PTC– JRE3300

Wireless RF Test Enclosures

Large interior for multiple device testing

- Roomy 7.75 x 16.25 x 10.25 inches inside
- Wide selection of I/O options using universal I/O plate
- Large enough for system tests
- Rugged welded aluminum construction
- Dual latches ensure tight RF shielding
- Excellent RF Isolation

Developed expressly for high volume testing of larger RF devices, the 3300 is roomy enough for holding both TX and RX devices for actual on-air tests. Top loading keeps door swing out of the way on congested benches.

Featuring rugged welded aluminum construction, you can be assured of its tight RF shielding effectiveness. Long life door gasket material along with double edge engagement not only provides solid RF shielding, but smooth trouble-free operation over its lifespan.

FEATURES & BENEFITS

- Double contact door shields ensures repeatable measurements
- 3/4" thick RF absorbing foam deadens standing waves and reflections for repeatable tests
- Heavy duty stainless steel friction hinges hold lid steady
- Rugged welded aluminum construction for long life
- Wide variety of connector options for every use

CONNECTORS

Universal I/O plate with incredible connector options. Easily changed in the field for multiple uses

ISOLATION

-90dB @ 1GHz, -90dB @ 3GHz, -80dB @ 6GHz

DIMENSIONS

Outside: 9.75" H x 18" W x 12" D (24.77cm H x 45.72cm W x 30.48cm D)



I/O OPTIONS

RF Feedthru: BNC, TNC, SMA, SMB, UHF, Type-N, reverse SMA, reverse TNC

Fiber optic: Fiber optic bulkhead feed thru: Type ST, FC. Fiber transceiver available for USB2.0 with speeds up to 480 MB/s

Connector covers: Dust cover caps with tether chains included for all RF connectors

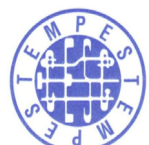
RF filtered data connectors: DB9, DB15, DB25, DB37, DB50, RJ11, RJ45, USB (Choice of 100 or 1000 pf filtering on data lines)

Power connection: 4 or 6 terminal barrier strip, 2500 pf filtering. 120/240 VAC power strip.

Cover interlock switch: safety switch contact



Rainford EMC Systems Ltd, North Florida Road, Haydock,
St Helens, WA11 9TN, United Kingdom
Tel: +44 (0) 1942 296190 Fax: +44 (0) 1942 275202 email: sales@rainfordemc.com
Registered No: 5869828 VAT No: 892 2090 18





Rainford PTC– JRE2900

Wireless RF Test Enclosures

Slim standing enclosure with shielded vents tests hot products

- Roomy 9.5 x 6.5 x 12.5 inches inside
- Ventilated, fan optional
- Fits on any benchtop
- Rugged welded aluminum construction
- Wide selection of I/O options with our universal I/O plate
- Convenient side open door with secure latch
- Available in side-by-side format for 19" rack mounting

Testing tall devices? The 2900 stands up to any test up to 18GHz! Featuring a wide swing open door with durable latch handle, this enclosure finds wide use in the WiFi test environment.

Tough 'honeycomb' vents maintain shielding effectiveness throughout the frequency range. Featuring rugged welded aluminum construction, you can be assured of its tight RF shielding effectiveness.

Long life door gasket material along with double edge engagement not only provides solid RF shielding, but smooth trouble-free operation over its lifespan.

Universal I/O plates allow almost any device to be interfaced inside the enclosure, and internal electromagnetic absorbing material reduces RF reflections and hot-spots.

FEATURES & BENEFITS

- Double contact door shields ensures repeatable measurements
- 3/4" thick RF absorbing foam deadens standing waves and reflections for repeatable tests
- Heavy duty hinges holds door steady
- Rugged welded aluminum construction for long life
- Wide variety of connector options for every use

CONNECTORS

Universal I/O plate with incredible connector options. Easily changed in the field for multiple uses

ISOLATION

-90dB @ 1GHz, -90dB @ 3GHz, -80dB @ 6GHz



DIMENSIONS

Outside: 11" H x 8" W x 14" D (27.94cm H x 20.32cm W x 35.56cm D)

Inside: 9.5" H x 6.5" W x 12.5" D (24.13cm H x 16.51cm W x 31.75cm D)

I/O OPTIONS

RF Feedthru: BNC, TNC, SMA, SMB, UHF, Type-N, reverse SMA, reverse TNC

Fiber optic: Fiber optic bulkhead feed thru: Type ST, FC. Fiber transceiver available for USB2.0 with speeds up to 480 MB/s

Connector covers: Dust cover caps with tether chains included for all RF connectors

RF filtered data connectors: DB9, DB15, DB25, DB37, DB50, RJ11, RJ45, USB (Choice of 100 or 1000 pf filtering on data lines)

Power connection: 4 or 6 terminal barrier strip, 2500 pf filtering. 120/240 VAC power strip.

Cover interlock switch: safety switch contact

Rainford EMC Systems Ltd, North Florida
Road, Haydock,
St Helens, WA11 9TN, United Kingdom
Tel: +44 (0) 1942 296190 Fax: +44 (0)





Rainford PTC– JRE2200

Wireless RF Test Enclosures

Our smallest enclosure - ideal for dongles ,mobile phones, pagers

- Roomy 3.25 x 6 x 8.5 inches inside
- Excellent RF Isolation
- Fits on any bench top
- Rugged welded aluminum construction
- Wide selection of I/O options
- Small size for many RF devices like Bluetooth and RFID

Low cost !!

Featuring rugged welded aluminum construction, you can be assured of its tight RF shielding effectiveness. Long life door gasket material along with double edge engagement not only provides solid RF shielding, but smooth trouble-free operation over its lifespan.

Our wide selection of I/O connectors allow almost any device to be interfaced inside the enclosure, and internal electromagnetic absorbing material reduces RF reflections and hot-spots.

FEATURES & BENEFITS

- Double contact door shields ensures repeatable measurements
- 1/2" thick RF absorbing foam deadens standing waves and reflections for repeatable tests
- Heavy duty stainless steel friction hinge holds lid steady
- Rugged welded aluminum construction for long life
- Wide variety of connector options for every use

CONNECTORS

Customer defined, see right

ISOLATION

-100dB @ 1GHz, -90dB @ 3GHz, -80dB @ 6GHz



DIMENSIONS

Outside: 4.5" H x 7.25" W x 9.75" D (11.43cm H x 18.42cm W x 24.77cm D)

Inside: 3.25" H x 6.0" W x 8.5" D (8.26cm H x 15.24cm W x 21.59cm D)

I/O OPTIONS

RF Feedthru: BNC, TNC, SMA, SMB, UHF, Type-N, reverse SMA, reverse TNC

Fiber optic: Fiber optic bulkhead feed thru: Type ST, FC. Fiber transceiver available for USB2.0 with speeds up to 480 MB/s

Connector covers: Dust cover caps with tether chains included for all RF connectors

RF filtered data connectors: DB9, DB15, DB25, DB37, DB50, RJ11, RJ45, USB (Choice of 100 or 1000 pf filtering on data lines)

Power connection: 4 or 6 terminal barrier strip, 2500 pf filtering on all lines

Cover interlock switch: safety switch contact



Rainford EMC Systems Ltd, North Florida
Road, Haydock,
St Helens, WA11 9TN, United Kingdom
Tel: +44 (0) 1942 296190 Fax: +44 (0) 1942





Rainford PTC– JRE4400

Wireless RF Test Enclosures

Designed for easy laptop computer testing

- Roomy 13.5 x 20.5 x 17 inches inside
- Wide selection of I/O options using universal I/O plate
- Easily holds any laptop
- Rugged welded aluminum construction
- Dual latches ensure tight RF shielding
- Excellent RF Isolation

The 4400 features rugged welded aluminum construction with superb RF shielding effectiveness. Long life door gasket material along with double edge engagement not only provides solid RF shielding, but smooth trouble-free operation over its lifespan.

Universal I/O plates allow almost any device to be interfaced inside the enclosure, and internal electromagnetic absorbing material reduces RF reflections and hot-spots.



FEATURES & BENEFITS

- Double contact door shields ensures repeatable measurements
- 3/4" thick RF absorbing foam deadens standing waves and reflections for repeatable tests
- Heavy duty hinges holds door steady
- Rugged welded aluminum construction for long life
- Wide variety of connector options for every use

CONNECTORS

Universal I/O plate with incredible connector options. Easily changed in the field for multiple uses

ISOLATION

-90dB @ 1GHz, -90dB @ 3GHz, -80dB @ 6GHz

DIMENSIONS

Outside: 15" H x 22" W x 18.5" D (38.10cm H x 55.88cm W x 46.99cm D)

Inside: 13.5" H x 20.5" W x 17" D (34.29cm H x 52.07cm W x 43.18cm D)

I/O OPTIONS

RF Feedthru: BNC, TNC, SMA, SMB, UHF, Type-N, reverse SMA, reverse TNC

Fiber optic: Fiber optic bulkhead feed thru: Type ST, FC. Fiber transceiver available for USB2.0 with speeds up to 480 MB/s

Connector covers: Dust cover caps with tether chains included for all RF connectors

RF filtered data connectors: DB9, DB15, DB25, DB37, DB50, RJ11, RJ45, USB (Choice of 100 or 1000 pf filtering on data lines)

Power connection: 4 or 6 terminal barrier strip, 2500 pf filtering. 120/240 VAC power strip.

Cover interlock switch: safety switch contact



Rainford EMC Systems Ltd, North Florida Road, Haydock,
St Helens, WA11 9TN, United Kingdom
Tel: +44 (0) 1942 296190 Fax: +44 (0) 1942 275202 email: sales@rainfordemc.com
Registered No: 5869828 VAT No: 892 2090 18

